

# 2010 Annual Subscription Application

**Yes!** Please enroll my household in the 2010 Annual Subscription.

I am enclosing:

- \$45 (for household)  
 \$35 Senior Citizen Household (65 years or older)

For your convenience we now accept



We would also like to donate \$ \_\_\_\_\_

**Please make checks payable to:**  
 Burholme Emergency Medical Service  
 830 Bleigh Street  
 Philadelphia, PA 19111

Check # \_\_\_\_\_

List all household members. Please print.

Name \_\_\_\_\_  
 \_\_\_\_\_  
 \_\_\_\_\_  
 \_\_\_\_\_

Visa/MC # \_\_\_\_\_

Expiration Date \_\_\_\_\_

Name as it appears on credit Card  
 (please print) \_\_\_\_\_

Phone # \_\_\_\_\_

Signature \_\_\_\_\_\*

\*A signature is required to process your subscription when paying with credit card.



**COMMUNITY AMBULANCE**

2010 CONTRIBUTING SUBSCRIBER  
 BURHOLME EMS NORTHEAST AMBULANCE  
 215-745-1550  
 WWW.BURHOLME.ORG



**To activate, remove and mail with payment today!**

**Keep This Card With Your Records!**

Burholme Emergency Medical Service and Northeast Community Ambulance are private, nonprofit 5013c organizations that receive no municipal tax support. Your subscriptions and donations help us provide your community with lifesaving equipment, competent and professional staff, and continuous personnel training. The subscription program applies to MEDICALLY NECESSARY EMERGENCY AMBULANCE SERVICES to any area acute care hospital. Nonsubscribers are responsible for all payments as required by their health care insurance plans. Subscription terms and condition available upon request.

**Please make checks payable to:**

**Burholme Emergency Medical Service**  
 830 Bleigh Street  
 Philadelphia, PA 19111

## SERVICE

### BASIC & ADVANCED LIFE SUPPORT

- BLS – Emergency medical technicians are trained in CPR, defibrillation, spine and limb immobilization techniques and oxygen therapy.
- ALS – Paramedics provide advanced life support beyond the BLS level via IV therapy and medications, assistive airway techniques.

## EDUCATION & COMMUNITY

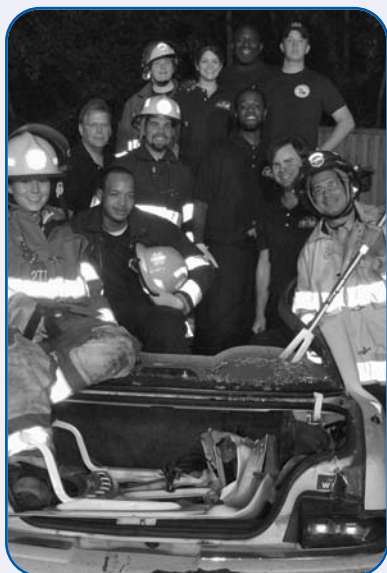
Each year we provide hundreds of hours of CPR and community first-response training, and provide EMS coverage during local sporting events, parades, races and other neighborhood activities.

[www.burholme.org](http://www.burholme.org)



## HOMELAND PREPAREDNESS

Communities must prepare for any incident that could disrupt daily life. BEMS and Northeast Community Ambulance are working with local, state and federal agencies to coordinate our staffs for first response intervention within our community as well as our region.





Subscription entitles any household member to EMERGENCY ambulance service, when available. We reserve the right to bill your insurance.

# BURHOLME EMERGENCY MEDICAL SERVICE

830 Bleigh Street  
Philadelphia, PA 19111  
www.burholme.org  
215-745-1550

Postmaster: Deliver to current occupant

NON-PROFIT  
U.S. POSTAGE  
**PAID**  
LANCASTER, PA  
PERMIT #88

Keep This Card With Your Records!

(Remove and return this card with your subscription payment.)

## DONATIONS

Burholme EMS and Northeast Community Ambulance are non-profit organizations operating without tax-dollar support. Your subscriptions and donations help us provide the community with the highest level of pre-hospital care.

- Senior Citizen Rate - \$35.00 (any household where at least (1) senior resides)
- Our Partnership represents more than 138 years of combined emergency service experience, answering 6,300 calls for help annually. Your joint subscription is good in any of the 10 neighborhoods we cover, no matter which ambulance responds.
- Help us help you. Your support allows us to maintain staff and equipment that could save your life or someone you love.
- Today we need you. Tomorrow, you might need us.
- Contributions are tax deductible.
- We are a non profit 5013C organization.



- Here are some example lines.....*
- Communications Equip. .... \$23,000.00**
  - Infusion Pum .....\$1,500.00**
  - Cardiac Monitor .....\$25,000.00**
  - Stretcher .....\$4,000.00**
  - Oxygen Resuscitator .....\$800.00**
  - Advanced Airway Kit .....\$700.00**
  - Trauma Kit .....\$400.00**
  - Pulse Oximeter .....\$700.00**

---

---

---

Affix Postage Here

Burholme Emergency Medical Service  
Headquarters  
830 Bleigh Street  
Philadelphia, PA 19111-3016